

MAGAZINES



YOU CAN NEVER HAVE ENOUGH

Having underwent numerous rounds of fully loaded drop testing, live fire testing in the thousands, and reliably holding up to fully automatic rates of fire, Leapers has the steadfast reliability shooters require out of a magazine. Take your preference of windowed or non-windowed glass fiber reinforced construction that has been adverse temperature tested for reliable function before, during, and after.

JUMP TO A SERIES

AR POLYMER MAGAZINES

152

5.56 / 10 Round

UTG PRO®  5.56 / 30 Round

5.56 / 30 Round / Windowed **[NEW]**

.308 / 25 Round / Windowed

AK/AKM POLYMER MAGAZINE

154

7.62X39 / 30 Round / Windowed

POLYMER MAGAZINES FOR GLOCK

156

9mm / 15 Round

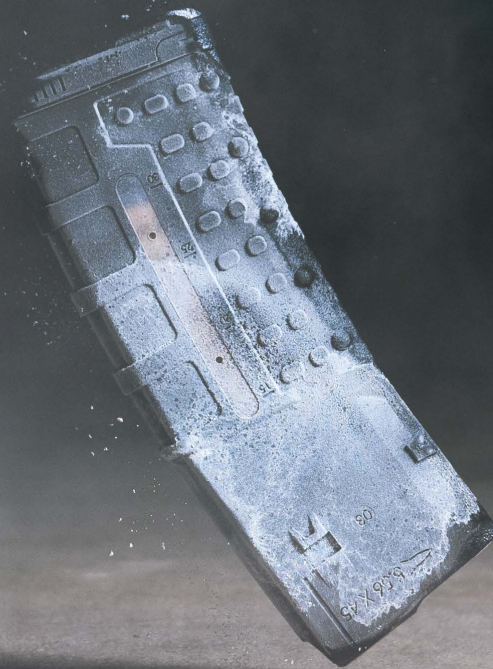
9mm / 17 Round

9mm / 33 Round

9mm / 33 Round / Windowed

[THIRD PARTY TRADEMARKS MAY BE USED IN THIS CATALOG FOR USER CONVENIENCE TO INDICATE THE FIT OR COMPATIBILITY OF THE APPLICABLE PRODUCT.]





WEIGHED, MEASURED, AND FOUND WORTHY

Torture tested and benchmarked against the best on the market, UTG® and UTG PRO® magazines take the lead in rugged reliability. All our magazines are made of ultra-durable and impact resistant glass fiber-reinforced polymer injected on world-class Fanuc machines. Frozen and heated to extreme temperatures and drop tested, when competitor magazines start to crack down the back after one or two drops, UTG mags simply refuse to fail. UTG® and UTG PRO®. For whatever tactical competition or training comes next.

AR POLYMER MAGAZINES



5.56 | 10 ROUND

■ / RBT-AM10



5.56 | 30 ROUND

■ / RBUAM01

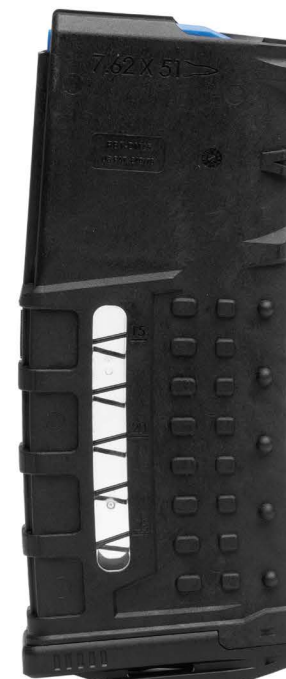


5.56 | 30 ROUND | WINDOWED

■ / RBT-AM30



■ / RBT-AM30D **[NEW]**



.308 | 25 ROUND | WINDOWED

■ / RBT-DM25

POLYMER MAGAZINES

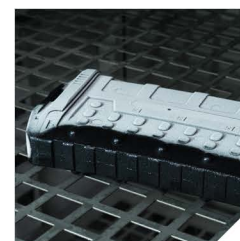
- » Durable and Impact Resistant Glass Fiber-reinforced Matte Black Polymer Construction
- » High Visibility Blue Anti-tilt follower and High Longevity Stainless Steel Spring for Reliable Feeding
- » Easy Disassembly and Maintenance with Removable Flared Floor Plate
- » US PAT. D849178



Fully Automatic Torture Tested



Drop Tested



Adverse -40°F to 160°F Temperature Tested



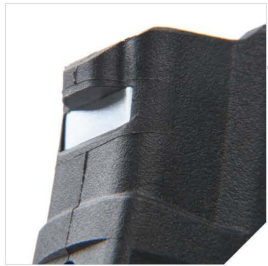
Four-way Anti-tilt High Visibility Blue Follower and High Longevity Stainless Steel Spring for Reliable Feeding



Removable Flared Floor Plate



30 Round Capacity with Reliable Feeding Constant Curve Geometry



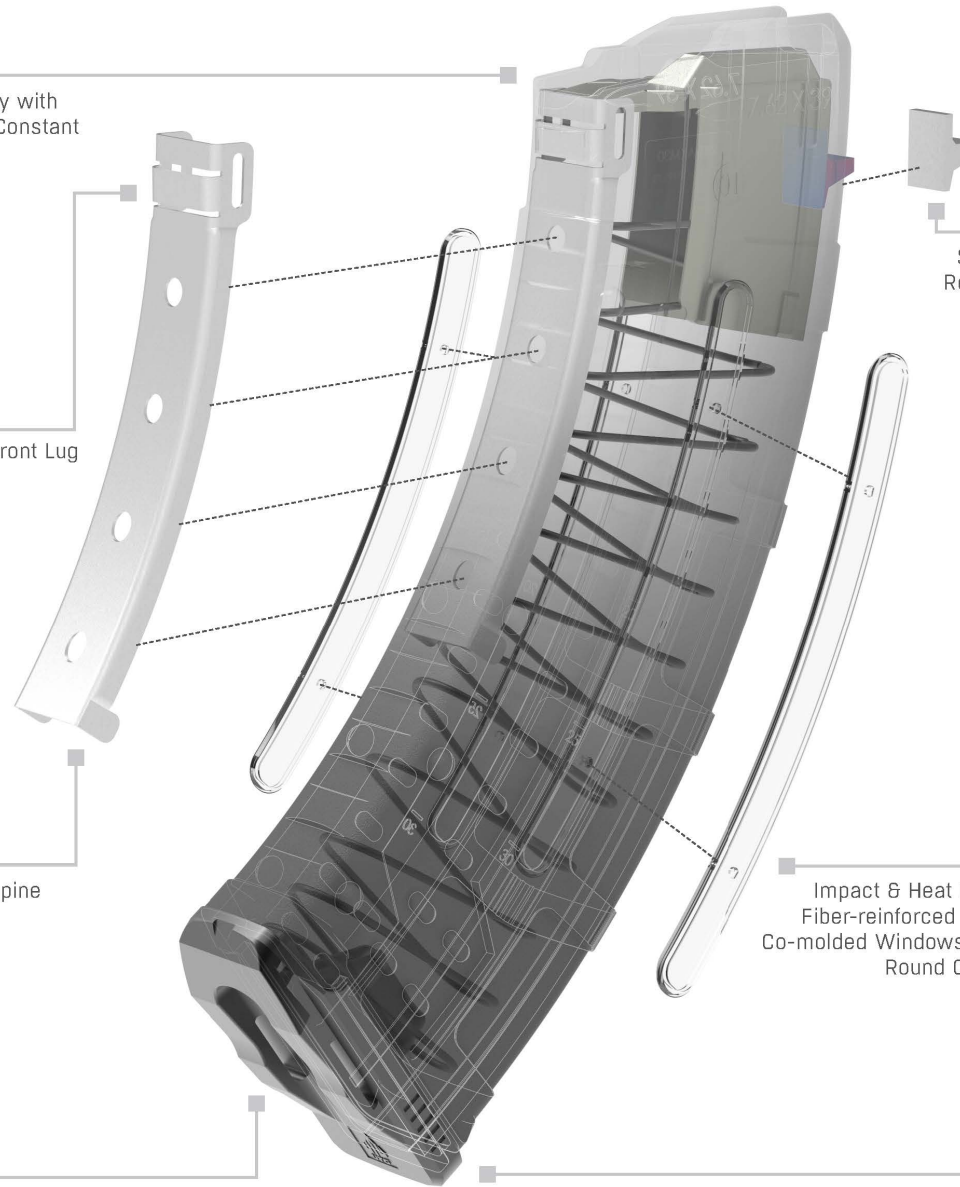
Steel-reinforced Front Lug



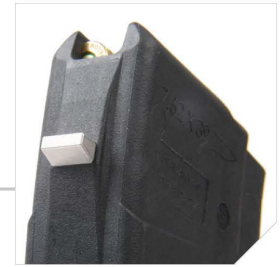
Steel-reinforced Spine



Cutout for Attaching Expedient Pull Tabs or Loops



Steel-reinforced Rear Locking Lug



Impact & Heat Resistant Glass Fiber-reinforced Main Body with Co-molded Windows and Debossed Round Count Indicators



Removable Flared Floor Plate

7.62 X 39 MM | 30 ROUND | WINDOWED

/ RBT-AKM30

AK/AKM WINDOWED POLYMER MAGAZINE



AK/AKM WINDOWED POLYMER MAGAZINE

- » Durable and Impact Resistant Glass Fiber-reinforced Matte Black Polymer Construction
- » Steel-reinforced Front Lug and Spine and Rear Locking Lug Provides Positive Magazine Retention while Adding Rigidity and Reducing Wear, Extending Service Life
- » High Visibility Blue Anti-tilt follower and High Longevity Stainless Steel Spring for Reliable Feeding
- » Co-molded Windowed 30 Round Capacity Main Body with Debossed Round Count Indicators and Reliable Feeding Constant Curve Geometry
- » Raised Bosses for Added Grip Retention
- » Easy Disassembly and Maintenance with Removable Flared Floor Plate
- » US PAT. D849178

/ RBT-AKM30





POLYMER MAGAZINES FOR GLOCK®



9MM | 15 ROUND

■ / RBT-GL915



9MM | 17 ROUND

■ / RBT-GL917



9MM | 33 ROUND

■ / RBT-GL933



9MM | 33 ROUND | WINDOWED

■ / RBT-PD933

US PAT. D989907

POLYMER MAGAZINES FOR GLOCK®

- » Durable and Impact Resistant Glass Fiber-reinforced Matte Black Polymer Construction
- » Anti-tilt High Visibility Blue Follower and High Longevity Stainless Steel Spring for Reliable Feeding
- » Left and Right Side Capacity Indicators
- » Easy Disassembly and Maintenance with Removable Flared Floor Plate
- » Compatible with Reversible Magazine Release for Left or Right-handed Users



Drop Tested



Live Fire Torture Tested



Adverse Temperature Tested



High Contrast Blue Anti-tilt Follower