

ACCESSORIES & TOOLS




UP FOR THE TASK AT HAND

Range bag essentials. Work bench must-haves. Tools of the trade. Try our new M-LOK® to ARCA rails to expand your reach, or find the exact length of rail section or sling swivel size you need. Our section of small odds and ends will round out your rifle to get it feeling and equipped just right.



JUMP TO A SERIES

| | | |
|--|--|-----|
| | UTG PRO®  M-LOK® ARCA RAILS [NEW] | 166 |
| | RAIL SECTIONS & COVERS [NEW] | 168 |
| | QD SLING SWIVELS & ADAPTORS | 169 |
| | AR ACCESSORIES [NEW] | 170 |
| | MUZZLE DEVICES & GAS BLOCKS | 171 |
| | CZ SCORPION ACCESSORIES | 172 |
| | TOOLS & MAINTENANCE | 172 |

(THIRD PARTY TRADEMARKS MAY BE USED IN THIS CATALOG FOR USER CONVENIENCE TO INDICATE THE FIT OR COMPATIBILITY OF THE APPLICABLE PRODUCT.)





 **UTG[®]**
PRO

UTG PRO® M-LOK® ARCA RAILS



3.1" LENGTH
/ TLUMA01



7.9" LENGTH
/ TLUMA02



9.4" LENGTH
/ TLUMA03



14.2" LENGTH
/ TLUMA04



UTG PRO® M-LOK® ARCA RAILS

- » Proudly Designed and Made in USA
- » Contoured to Prevent Snagging and Discomfort When Shooting Unsupported
- » CNC Machined 7075-T6 Aluminum Finished in a Matte Black Anodize
- » M-LOK® Interface Spaced for Installation in Complete Slots or in Between Adjacent Slots
- » Laser Engraved Positional Indicator Markings
- » Forms a Continuous Rail when Multiple Rails are Installed in Line
- » Compatible with Standard ARCA, R-LOCK, and MRAS QD Adaptors and Mounts

| | TLUMA01 | TLUMA02 | TLUMA03 | TLUMA04 |
|--------------------------------|---------------------|---------------------|---------------------|----------------------|
| Length x Width x Height | 3.1" x 1.5" x 0.32" | 7.9" x 1.5" x 0.32" | 9.4" x 1.5" x 0.32" | 14.2" x 1.5" x 0.32" |
| Material | 7075-T6 Aluminum | 7075-T6 Aluminum | 7075-T6 Aluminum | 7075-T6 Aluminum |
| Mount type | M-LOK® | M-LOK® | M-LOK® | M-LOK® |
| Rail Space Requirement | 2 Slots | 5 Slots | 6 Slots | 9 Slots |
| Weight | 1.3 oz | 2.6 oz | 3.0 oz | 4.1 oz |



RAIL SECTIONS & COVERS



M-LOK® PANEL COVERS **NEW**

- » Lightweight heat-resistant polymer construction
- » Provides added grip and snaps into place without the need for tools
- » Horizontal pass-through underneath each panel for cable management
- » Pack of 6 and compatible with most octagonal profile handguards

Set of 6 / RBT-CMP01



RUBBERIZED M-LOK® RAIL COVERS

- » 3.15" in Length, Slim, Lightweight, and Securely Installs via Two M-LOK® Screws and Nuts
- » Nonslip Textured Design Provides a Sure Grip Every Time
- » Molded from Durable Impact and Heat Resistant Polymer with a Rubberized Overmold

Set of 4 / RB-HP30M



M-LOK® ANGLED PICATINNY MOUNT

- » Angled Offset Positions Lights, Optics, or Other Accessories at the 11 or 1 O'clock Positions on Most Handguards
- » Removable Spacer Adjusts Clearance to Fit Various Handguard Profiles
- » Matte Black Anodized Aluminum Construction

/ MT-MP45

UTG PRO®

M-LOK® PICATINNY RAIL SECTIONS

- » Proudly Designed and Made in USA
- » Precision CNC Machined 6061-T6 Aluminum Construction Finished in Matte Black Anodize



3-SLOT
/ MTURS10S



7-SLOT
/ MTURS10M



4-SLOT
/ MTURS09S



8-SLOT
/ MTURS09M

PICATINNY RAIL SECTIONS FOR G36®

- » Precision CNC Machined 6061-T6 Aluminum Construction Finished in Matte Black Anodize
- » Numbered Markings for Quick Reference when Installing or Removing Attachments



UTG PRO®

13-SLOT X1, 9-SLOT X2

Set of 3 / MTURS11



7-SLOT X2

Set of 2 / MNT-P501



13-SLOT X1, 7-SLOT X2

Set of 3 / MNT-P503



13-SLOT X3

Set of 3 / MNT-P505



QD SLING SWIVELS & ADAPTORS



PICATINNY SLING SWIVEL MOUNT WITH 1.25" LOOP

- » Precision Machined Aircraft Aluminum and Steel Construction with a Matte Black Finish
- » Solid Steel 1.25" Sling Loop Compatible with Most Slings on the Market

/ TL-SWMTPO1



UTG PRO[®] SLING SWIVEL ADAPTORS

- » Precision Machined from 6061-T6 Aircraft Aluminum with a Matte Black Anodization
- » Accepts Any Standard Quick Detach Sling Swivel with 0.37" Diameter Swivel Stud
- » Designed with Quarter Turn Rotational Overtravel Stops to Restrict Swivel Movement

M-LOK[®] / TLUSW001
Keymod / TLUSW002



ANGLED QD SLING SWIVEL PICATINNY ADAPTOR

- » Accepts Any Standard Quick Detach Sling Swivel with 0.37" Diameter Swivel Stud
- » Precision Machined from Aircraft Aluminum with a Matte Black Finish
- » Low Profile and Lightweight Design with 45° Offset
- » Designed with Quarter-turn Rotational Overtravel Stops to Restrict Swivel Movement

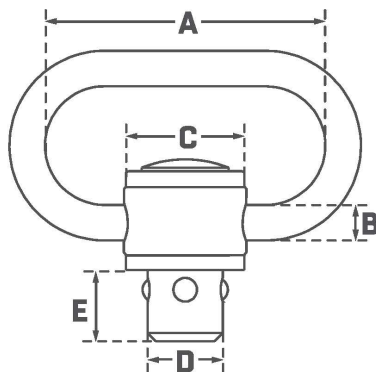
/ TL-SWPM01



PICATINNY/KEYMOD QD SLING SWIVEL ADAPTOR

- » Compact and Lightweight Design Adaptable for Installation on Both Picatinny or Keymod Rails
- » Accepts Any Standard Quick Detach Sling Swivel with 0.37" Diameter Swivel Stud
- » Precision Machined from Aircraft Aluminum with a Matte Black Finish

/ TL-SWPK01



STEEL QD SLING SWIVELS

- » High Strength Steel Construction with a Matte Black Finish



1.09" LOOP



1.25" LOOP



1.29" C-SHAPE LOOP



1.38" LOOP



1.41" LOOP

| | TL-QDSW08A | TL-QDSW08B | TL-QDSW08C | TL-QDSW18 | TL-QDSW38 |
|--------------------------------|------------|------------|------------|-----------|-----------|
| <i>A-Loop Width</i> | 1.09" | 1.25" | 1.29" | 1.38" | 1.41" |
| <i>B-Loop Thickness</i> | 0.13" | 0.13" | 0.13" | 0.17" | 0.18" |
| <i>C- Push Button Diameter</i> | 0.47" | 0.47" | 0.47" | 0.60" | 0.64" |
| <i>D-Stud Diameter</i> | 0.37" | 0.37" | 0.37" | 0.37" | 0.37" |
| <i>E-Stud Height</i> | 0.35" | 0.35" | 0.35" | 0.37" | 0.35" |



AR ACCESSORIES NEW



OVERSIZED BOLT CATCH

- » Neutrally Justified Upper Bolt Release Paddle is Enlarged, Serrated, and Contoured to Aid Manipulation whether Thumbing or Palming the Bolt Release
- » Partially Enlarged and Angled Outward Lower Bolt Catch to Aid Manipulation and Accessibility
- » Matte Black Steel Construction
- » Includes Detent, Detent Spring, and Roll Pin

■ / TLT-TKSBC-B



AMBIDEXTRIOUS MAGAZINE RELEASE

- » Drops into most, if not all, .223/5.56 receivers that accept a mil-spec magazine catch
- » Left and right-side releases contoured to the pad of the finger
- » Low profile prevents inadvertent release and does not interfere with other controls in the manual of arms
- » Matte Black Steel and Aluminum Construction

■ / TLT-TKSMR-B



AMBIDEXTRIOUS 60/90 SAFETY SELECTOR

- » User Configurable for 60° or 90° Selector Throw
- » Ergonomic and Reversible Short and Long Selector Levers
- » Matte Black Anodized Aluminum and Steel Construction
- » Installation Hardware, Detent, and Detent Spring Included
- » Compatible with Most Semi-auto Fire Control Groups

■ / TLT-TKSLT-B



ENHANCED FORWARD ASSIST

- » Top edge of forward assist removed to provide more clearance for charging handle manipulation particularly when ambidextrous
- » Face of forward assist is serrated and angled more to rear for easier manipulation whether using the thumb or palm
- » Matte black steel and aluminum construction
- » Installation hardware and spring included

■ / TLT-TKSFA-B



ENHANCED TRIGGER GUARD

- » Enlarged Open Geometry Provides Easier and Safer Access to Trigger Particularly when Wearing Gloves
- » Aluminum Construction Finished in a Matte Black Anodization
- » Includes Installation Tool and Hardware

■ / TLT-TKSTG-B



ENHANCED PIVOT & TAKEDOWN PINS

- » Capped ends with raised rim allow pins to be pulled by hand, cartridge rim, or tool in addition to being pushed
- » Pivot pin slot cut aids in its detent and spring installation
- » Dimpled takedown pin
- » Black manganese phosphate steel construction
- » Includes detents and springs

■ / TLT-TKSTP-B

OVERSIZED BOLT CATCH

- » Serrated and Oversized Bolt Release and Extended Catch for Easier Reach and Manipulation
- » Steel Construction Finished in Matte Black
- » Includes Installation Hardware

■ / TLT-TKSBC



AMBIDEXTRIOUS 45/90 SAFETY SELECTOR

- » Reversible Short and Long Oversized Levers Finished in a Matte Anodization
- » Aluminum and Steel Construction
- » 45° or 90° Throw Configurable
- » Includes Installation Tool, Hardware, Detent, and Detent Spring

■ / TLT-TKSLT
 ■ / TLT-TKSLTB
 ■ / TLT-TKSLTR



AMBIDEXTRIOUS EXTENDED MAGAZINE RELEASE

- » Features Oversized and Extended Left and Right Side Releases for Easier Reach and Manipulation
- » Aluminum and Steel Construction Finished in a Matte Anodization
- » Includes Installation Tool and Hardware

■ / TLT-TKSMR
 ■ / TLT-TKSMRB
 ■ / TLT-TKSMRR



OVERSIZED TRIGGER GUARD

- » Enlarged Open Geometry Provides Easier and Safer Access to Trigger Particularly when Wearing Gloves
- » Aluminum Construction Finished in a Matte Anodization
- » Includes Installation Tool and Hardware

■ / TLT-TKSTG
 ■ / TLT-TKSTGB
 ■ / TLT-TKSTGR



ENHANCED AR15 LOWER UPGRADE KIT NEW

■ / TLT-TKS02



AR15 LOWER UPGRADE KIT

■ / TLT-TKS01





QUICK INSTALL DUST COVER

- » Matte Black Impact and Heat Resistant Polymer Construction with Steel Spring-loaded Detent
- » Patented Tool-free Design Quickly Installs Without Having to Remove The Handguard Prior
- » Compatible with all .223/5.56 Mil-spec and Most Billet Upper Receivers
- » US PAT. 10393467

/ RBT-TKSDC



AR15 QD RECEIVER END PLATE

- » Quarter-turn Rotational Overtravel Stops Restrict Sling Swivel Movement
- » Steel Construction with Matte Black Finish
- » Compatible with Mil-spec Forged and Most Billet Lower Receivers

/ TL-T6TD03



MUZZLE DEVICES & GAS BLOCKS

UTG PRO[®] 

MUZZLE BRAKES

- » Steel Construction Finished in Black Nitride
- » 1/2"-28 UNEF Thread Compatible, Crush Washer Included
- » Gas Dispersion Porting Reduces Felt Recoil and Muzzle Rise
- » Up to 50% Recoil Reduction



9MM 1/2"X28

/ TLUMD03



.223/5.56 1/2"X28

/ TLUMD01



.223/5.56 1/2"X28

/ TLUMD02

BLANK FIRING ADAPTOR

- » Durable Reinforced Steel Construction Finished in High Visibility Yellow
- » Compatible with 11.5" - 16" M4 Carbine and AR15 Equipped with A1/A2 Flash Hider

 / MNT-16AD2-C



MICRO GAS BLOCK

- » Low Profile Gas Block for .750" at The Gas Port
- » Machined from 4140 Steel with Durable Phosphate Finish
- » Includes Gas Tube Roll Pin, Set Screws, and Allen Wrench

/ MNT-ARMGB01





ACCESSORIES FOR CZ®



CHARGING HANDLE FOR CZ® SCORPION™ EVO 3

- » Reversible for Left or Right Side Drop-in Installation
- » Extended and Partially Serrated Handle with Dehorned Corners and Melted Contours
- » Steel Guide with 6061-T6 Aluminum Handle Finished in a Matte Black, Red, or Blue Anodization
- » Compatible with Both Pistol and Carbine Models

■ / TLT-CSCH01
■ / TLT-CSCH01B
■ / TLT-CSCH01R



SAFETY SELECTORS FOR CZ® SCORPION™ EVO 3

- » Machined from 6061-T6 Aluminum Finished in a Matte Black, Red, or Blue Anodization
- » Drop-in Installation, No Permanent Modification Required
- » Compatible with Both Pistol and Carbine Models
- » Extended Selectors with Dehorned Corners and Melted Contours
- » Ergonomic Thumb Index for Ease of Manipulating Safety On and Off

■ / TLT-CSSLT01
■ / TLT-CSSLT01B
■ / TLT-CSSLT01R

TOOLS & MAINTENANCE



.223 BROKEN SHELL EXTRACTOR

- » Removes Broken Shell Casings Lodged in the Chamber
- » Threaded Two-piece Design to Adjust Overall Length
- » Precision Machined from Steel with Matte Black Finish
- » A Handy Must-have Tool for Shooters and Hunters

/ TL-EX223



.308/7.62X51MM BROKEN SHELL EXTRACTOR

- » Removes Broken Shell Casings Lodged in the Chamber
- » Threaded Two-piece Design to Adjust Overall Length
- » Precision Machined from Steel with Matte Black Finish
- » A Handy Must-have Tool for Shooters and Hunters

/ TL-EX308



AR15 RECEIVER WEDGE

- » Tightens and Improves Upper to Lower Receiver Fitment

/ RB-A005



AR15/AR308 ARMORER'S MULTI-FUNCTION COMBO WRENCH

- » Provides the Tools to Install and Remove Parts Often Replaced and or Reinstalled on Both the AR15 and AR308 Platforms such as: Standard A2 Flash Hider, Delta Ring Assembly, Rifle Length Buffer Tube, Castle Nut, and More
- » Steel Construction with Wear Resistant Finish for Long Lasting Durability

/ TL-ARWR01



MINI AR15 ARMORER'S WRENCH

- » Provides the Tools to Install and Remove Parts Often Replaced and or Reinstalled on the AR15 Platforms such as: Standard A2 Flash Hider, Delta Ring Barrel Nut Assembly, Rifle Length Buffer Tube, Castle Nut, and More
- » Steel Construction with Wear Resistant Finish for Long Lasting Durability

/ TL-ARWR02



9MM PISTOL CLEANING KIT

- » Conveniently Stows Away in Any Range Bag in Its Compact Polymer Case (4.63"x2.88"x1.50")
- » Kit Includes an 8-32 Threaded Copper Alloy Cleaning Rod with the Following Threaded Cleaning Accessories: Patch Loop, Bronze and Nylon Brush, and a Cotton Mop

■ / TL-CLP9MMKT



.223/5.56 CLEANING KIT

- » Includes a 5-piece Extension Steel Cleaning Rod with Adaptor, Patch Loop, Bronze Bore Brush, Chamber Brush, Double-Ended Nylon Utility Brush, ½ oz Oil Bottle, and Cleaning Patches
- » All Parts Conveniently Store within the Included OD Green Nylon Pouch with Belt Loop and ALICE Clip Attachment Point and Featuring Two Hook-and-loop Closure Pockets and External Snap Button Flap

/ TL-A041



CHAMBER SAFETY FLAG

- » Bright Red for High Visibility and Reliable Confirmation of an Unloaded Firearm
- » Molded from Impact Resistant Polymer with Reinforced Head for Maximum Durability
- » Ideal for Cold Range Use and Mass Produced Firearms

Set of 6 / RB-CSF06



AK/SKS FRONT SIGHT TOOL

- » An Essential Tool for Making Fine Front Sight Post Windage and Elevation Adjustments
- » Compatible with AK, SKS, MAK, and SLR95 Pattern Rifles

/ SCP-WEA05



UNIVERSAL SHOTGUN FOREND WRENCH

- » Nickel Plated Steel Construction
- » User Friendly with Ergonomic Handles for Easy Forend Removal and Installation
- » Compatible with REMINGTON® 870™, MOSSBERG® 500A/C, 835, and Other Clones

/ TL-SHWR01