



#T640
SKS

HIGH PROFILE SEE-THRU MOUNT WITH INTEGRAL RINGS

MNT-T640

- Solid Steel Base to Fit All SKS Receivers
- Integral Aluminum 1" Rings for Compact Scopes
- Optimal Clearance for Use with Iron Sights
- Compatible with UTG Shell Deflector TL-SDSK01



MNT-T640

#T640

SKS

**HIGH PROFILE SEE-THRU MOUNT
WITH INTEGRAL RINGS**

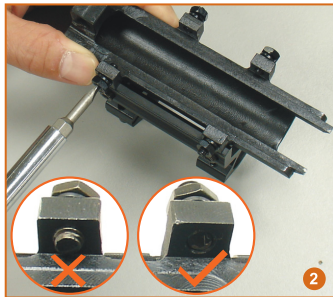
HIGH PROFILE SEE-THRU MOUNT WITH INTEGRAL RINGS INSTALLATION GUIDE



**Caution: Make sure firearm is not loaded.
Remove magazine and examine chamber.
Use safe handling procedures at all times.**



Locking Pin

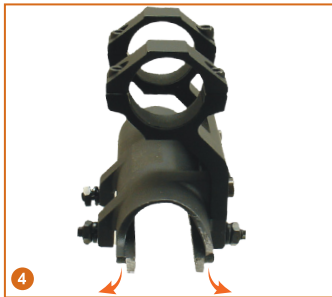


1. Locate the receiver cover of your rifle. Pull out the locking pin. Carefully and gently lift and remove the existing receiver cover. Do not pull too quickly which may result in sudden release of the bolt operating spring.

2. Loosen the 4 Set Screws on the mount with a flat screw driver. Make sure they are loosened enough so that they do not stick out through the holes.



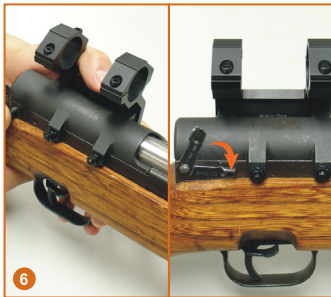
3. The receiver cover mount is made intentionally longer than the original receiver cover. Gently file the front two prongs of the mount if they are too long for your firearm. DO NOT over file. Maintain prong angle to ensure a good snug fit.



4. Place the mount in a vise with padded jaws for protection. Bend one of the front prongs very slightly. This will allow a snug fit of the cover both vertically and horizontally, and improve shooting accuracy.



5. Slide the scope mount onto receiver. Press it forward and down until the front prongs are inserted into the receiver completely.



6. Align the Locking Pin with the pin hole at the rear of the scope mount. Drive the locking pin back into receiver using your finger or gently tapping with a rubber mallet until the pin is flush with the receiver surface at the opposite end. Then, turn the locking pin handle forward to secure a tight lock. Due to different rifle variants, the rear pin hole area may need minor filing for best fit.



7. Tighten the 4 Set Screws and the nuts.



8. Test drive the bolt carrier and check its movement under the receiver cover mount to ensure that there is no interference to the bolt operation. If there is any interference, DO NOT use until it is resolved. Your scope mount is now fully seated and fitted into receiver, and is ready for scope installation.

RELATED SKS PRODUCTS

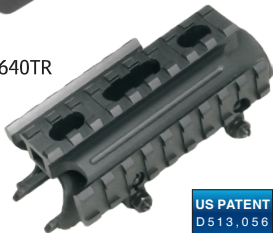
MTU017



TL-SDSK01



MNT-T640TR



US PATENT
D513,056

MNT-T642

