



DPMS GII

SUPER SLIM FREE FLOAT RAIL SYSTEM

- Proudly Designed and Made in **USA**
- Includes 2 M-LOK[®] Accessories, an 8-Slot Picatinny Rail Section and a QD Sling Swivel Adaptor
- Patented Two-piece Steel Barrel Nut and Integral Anti-rotation Tabs for a Secure Installation
- Ergonomic Octagonal Profile with Grooved Surface for a Solid and Comfortable Grip
- Scalloped Top Picatinny Rail Edges for Easy and Snag Free Accessory Mounting
- Precision Machined from 6061-T6 Aluminum and Finished in a Matte Black Anodization



DPMS GII
SUPER SLIM FREE FLOAT
RAIL SYSTEM

MTU020SSME / MTU026SSME



WARNING: While following all basic rules of firearm safety, first ensure the firearm is unloaded by confirming the chamber is empty and the magazine is removed.



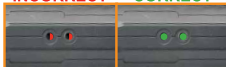
1 With the bolt carrier group (BCG) fully forward, remove the upper receiver from the lower receiver by pushing out the two lower receiver takedown pins. Remove the BCG and charging handle from the upper receiver.

Remove the stock handguard, muzzle device, gas block and tube, and barrel nut. Retain the gas block (if it is the low profile variant) and tube and muzzle device as they will be reinstalled later. A low profile gas block is required to complete installation. The stock DPMS GII low profile gas block is compatible and can be reused.



2 With the barrel inserted into the upper receiver, hand-tighten the Super Slim barrel nut onto the upper receiver's barrel nut threads.

INCORRECT CORRECT



3
Insert the locking ring into the barrel nut with its cutout facing upward. Ensure the locking ring's screw holes are visible through the barrel nut's slots and will have enough clearance so as to not be blocked later on when the barrel nut is properly torqued with its gas tube channel timed with the upper receiver.



4
Test for handguard alignment by carefully sliding the handguard over the barrel nut and locking ring and ensuring the handguard's screw holes align with the barrel nut slots and the threaded locking ring screw holes.



5
Although rare, if you cannot achieve proper alignment use the included spacer(s) as depicted above and repeats steps 2-4. Once proper alignment is achieved, remove the handguard from the barrel and the locking ring out from inside the barrel nut.



Attach the included barrel nut wrench adaptor to a proper torque wrench and insert the barrel nut wrench into the barrel nut's middle slot.



Carefully torque down the barrel nut until the barrel nut's gas tube channel is aligned with the upper receiver's gas tube cutout. Recommended torque value is 35 ft-lb.



Reinsert the locking ring back into the barrel nut with its cutout facing upward and reinstall the low profile gas block and tube and muzzle device.



Carefully slide the handguard back on until it meets the receiver.

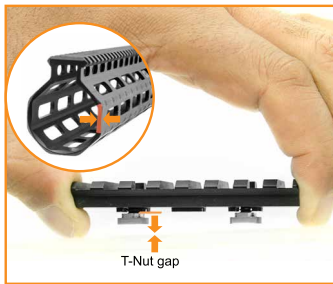


Install the 6 Torx screws with the included tool until hand-tight. If desired, apply a small amount of locking compound to the 6 Torx screws prior to tightening.

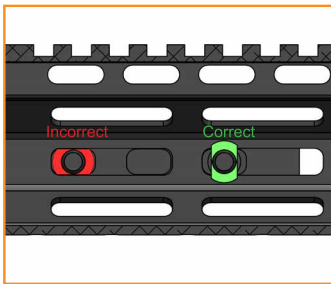


Once all 6 screws are hand-tightened proceed to torque them to the recommended 25 in-lb. Reinstall the charging handle and bolt carrier into the upper receiver and then reinstall the upper back onto the lower. Function check firearm.

ATTACHING M-LOK® PICATINNY RAIL SECTION AND QD SLING SWIVEL ADAPTOR



In order to properly secure a rail section or other M-LOK® accessory on your rail system, the T-Nut gap must be slightly larger than the rail thickness. Either measure the rail thickness or use the edge of the rail as a gauge.



If the T-Nuts are spaced with too much gap they will rotate freely when trying to tighten. Alternately, if the T-Nuts are not spaced with enough gap they will not rotate at all. Observe the T-Nut during the installation process to be certain that they have rotated to their correct position as shown.

Caution: Other accessories (e.g. polymer product) may require different torque values for installation. Refer to manufacturer's instructions for correct specification.



Position the T-Nuts as shown above and place the rail section/QD sling swivel adaptor into the M-LOK slot(s). Make sure the rail section/QD sling swivel adaptor seats evenly.



Using the correctly supplied Hex wrench, insert the wrench into the rail section/QD sling swivel adaptor screws and rotate clockwise. Recommended torque value: 30 in.-lb.